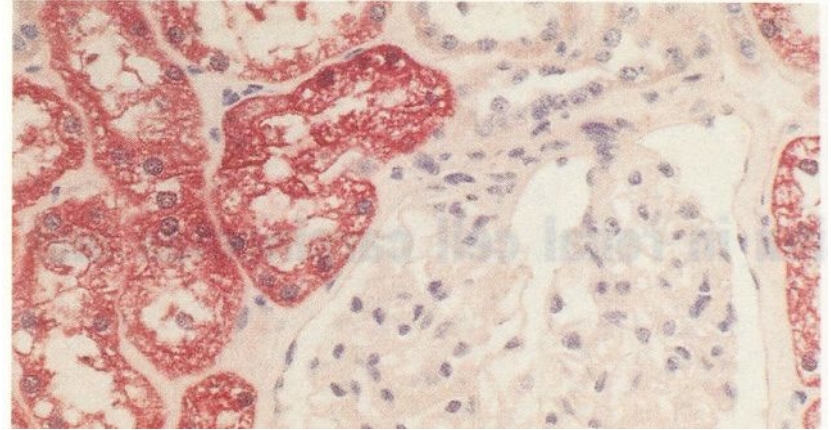
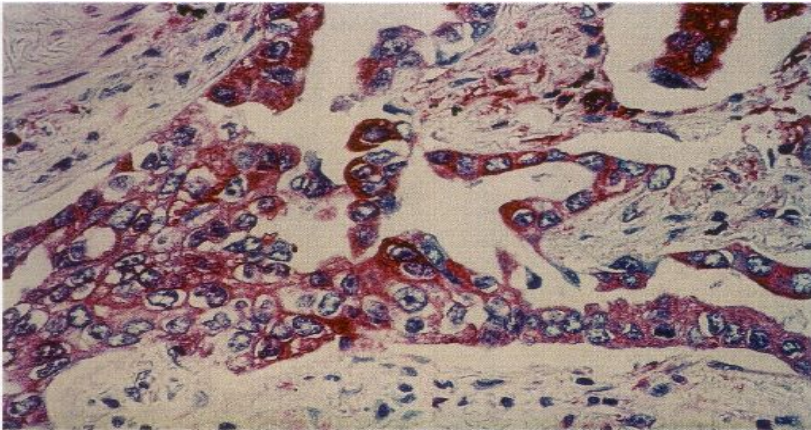


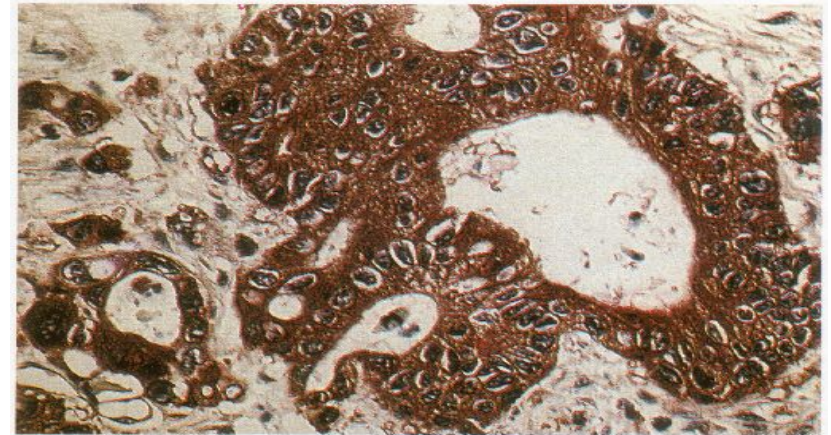
L-PK staining of a rat liver
with the anti-L-PK antibody clone AD12
from: Steinberg et al., Virchows Archiv (1999), 424: 213-220.



L-PK staining of human proximal renal tubules
with the anti-L-PK antibody clone HME2ED
from: Brinck et al., Virchows Archiv (1994), 424: 177-185.



M2-PK staining of a human adenocarcinoma
of the lung with the anti-M2-PK antibody clone DF4
from: Hugo et al., Anticancer Research (1999), 19: 2753-2858.



M2-PK staining of a human colon carcinoma
with the anti-M2-PK antibody clone DF4
from: Eigenbrodt et al., Anticancer Res. (1997), 17: 3153-3156